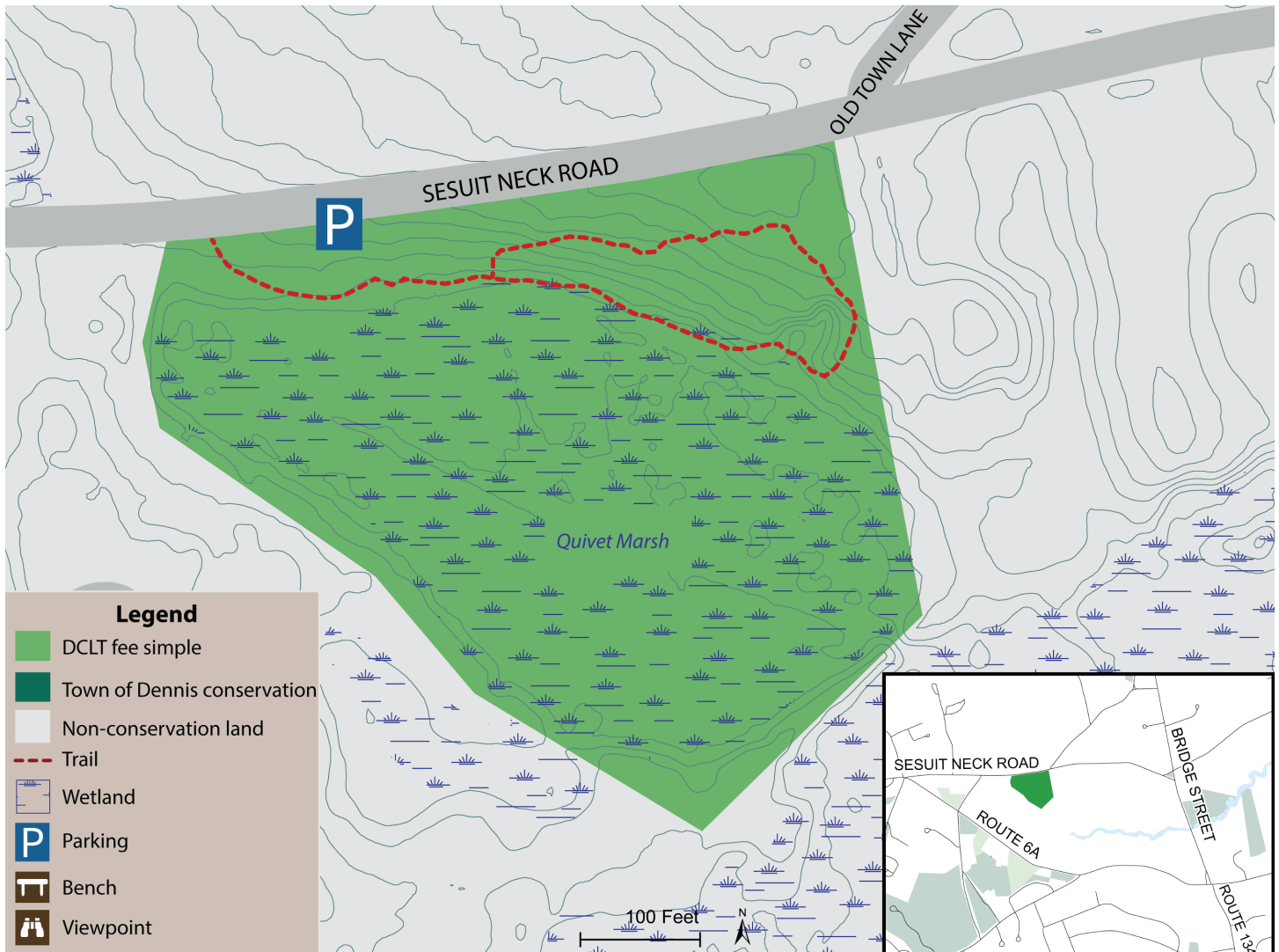




Sesuit Neck

Enjoy the trails and keep in mind:

- ◆ No fires, camping, or vehicles
- ◆ No smoking or alcohol
- ◆ Carry out what you carry in
- ◆ Respect private property
- ◆ Do not disturb or remove plants or wildlife
- ◆ No hunting



This trail, found to the right of the DCLT sign along Sesuit Neck Road, will take you on a pleasant walk that runs along the border of Quivet Marsh at its headwaters. Pitch pine and phragmites, an invasive perennial wetland grass, can be found where the trail borders the marsh. The trail is a short loop: allowing you to walk along the marsh, crossing a small bridge, and then follow the trail as it rises along the ridge below Sesuit Neck Road and eventually reconnects with the marsh side trail, taking you back to the trailhead.

Trail: Easy, slight elevation gain, 0.18 miles.

Directions: 89 Sesuit Neck Rd, East Dennis; traveling north on Bridge St. from the Rt. 134-Rt. 6A intersection, turn left on Sesuit Neck Rd. If traveling east on 6A, take a slight left to turn on Sesuit Neck Rd. From this direction, the trailhead will be on the right with parking past the trailhead on the side of the road in front of the DCLT sign.

Map produced: Jan. 2021

Map by: Emily Ray, Ameri-Corps Cape Cod/DCLT

Data sources: MassGIS, Dennis GIS Dept., DCLT