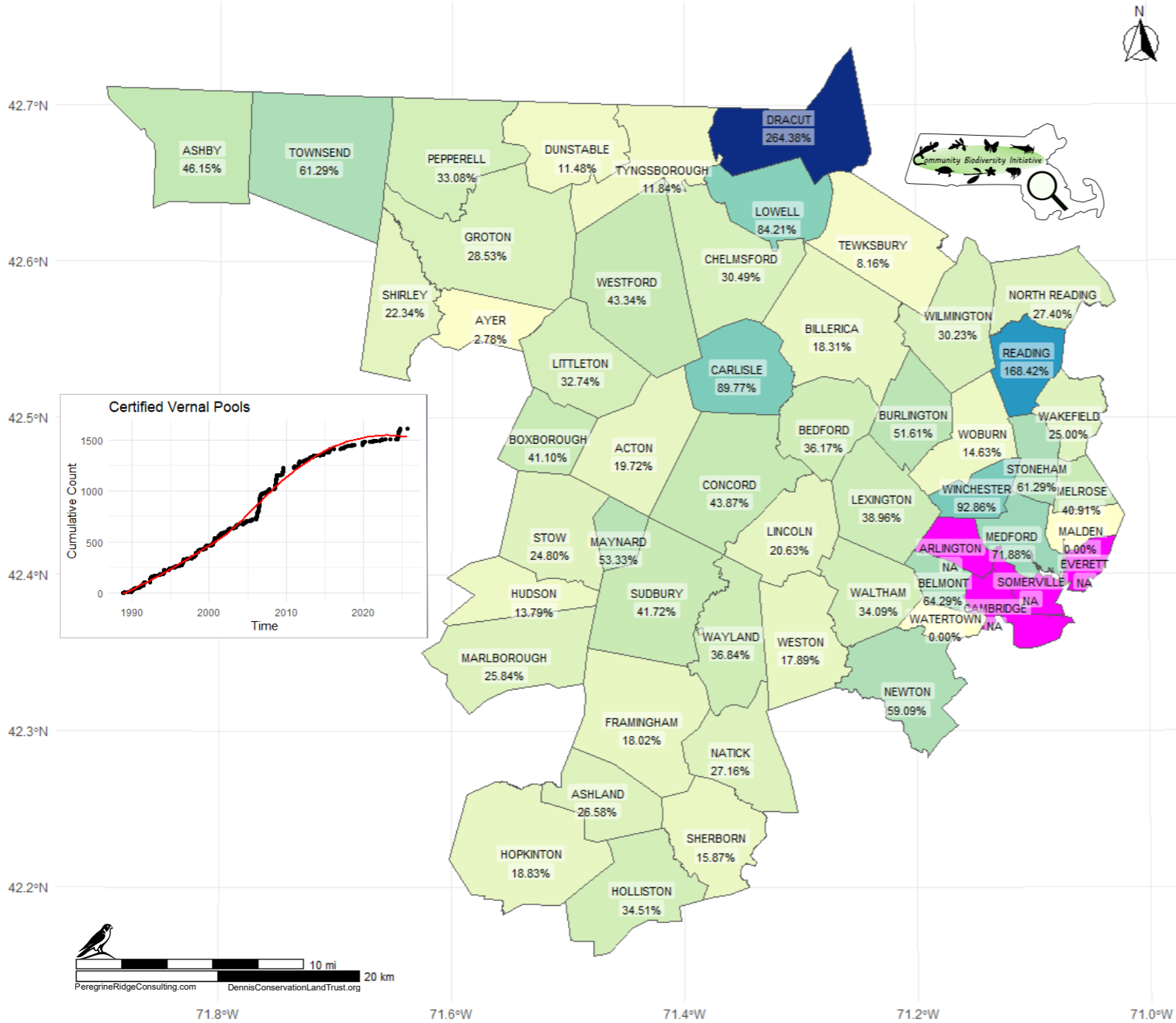
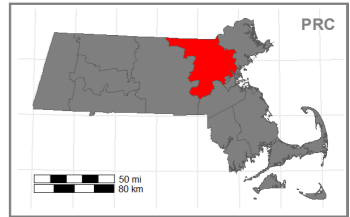


Count of Certified/Potential Vernal Pools in Middlesex County



Town	CVP	PVP	% Certified	County Rank	State Rank
ARLINGTON	0	-	-	-	-
CAMBRIDGE	0	-	-	-	-
EVERETT	0	-	-	-	-
SOMERVILLE	0	-	-	-	-
MALDEN	0	5	0.00	49	329
WATERTOWN	0	5	0.00	49	329
AYER	2	72	2.78	48	320
TEWKSBURY	8	98	8.16	47	279
DUNSTABLE	14	122	11.48	46	264
TYNGSBOROUGH	18	152	11.84	45	261
HUDSON	8	58	13.79	44	247
WOBURN	6	41	14.63	43	242
SHERBORN	20	126	15.87	42	233
WESTON	17	95	17.89	41	219
FRAMINGHAM	20	111	18.02	40	216
BILLERICA	13	71	18.31	39	213
HOPKINTON	29	154	18.83	38	209
ACTON	28	142	19.72	37	203
LINCOLN	26	126	20.63	36	198
SHIRLEY	21	94	22.34	35	189
STOW	31	125	24.80	34	176
WAKEFIELD	6	24	25.00	33	173
MARLBOROUGH	23	89	25.84	32	170
ASHLAND	21	79	26.58	31	166
NATICK	22	81	27.16	30	161
NORTH READING	20	73	27.40	29	160
GROTON	101	354	28.53	28	159
WILMINGTON	26	86	30.23	27	145
CHELMSFORD	25	82	30.49	26	143
LITTLETON	37	113	32.74	25	131
PEPPERELL	44	133	33.08	24	128
WALTHAM	15	44	34.09	23	122
HOLLISTON	49	142	34.51	22	121
BEDFORD	17	47	36.17	21	113
WAYLAND	42	114	36.84	20	109
LEXINGTON	30	77	38.96	19	101
MELROSE	9	22	40.91	18	93
BOXBOROUGH	30	73	41.10	17	92
SUDBURY	68	163	41.72	16	90
WESTFORD	127	293	43.34	15	83
CONCORD	68	155	43.87	14	81
ASHBY	30	65	46.15	13	75
BURLINGTON	16	31	51.61	12	66
MAYNARD	16	30	53.33	11	62
NEWTON	13	22	59.09	10	53
STONEHAM	19	31	61.29	8	50
TOWNSEND	57	93	61.29	8	50
BELMONT	9	14	64.29	7	43
MEDFORD	46	64	71.88	6	32
LOWELL	16	19	84.21	5	26
CARLISLE	79	88	89.77	4	23
WINCHESTER	13	14	92.86	3	20
READING	64	38	168.42	2	5
DRACUT	193	73	264.38	1	1
<b>MIDDLESEX Total</b>	<b>1612</b>	<b>4423</b>	<b>36.45</b>		



**Coordinate System:** NAD83  
The data are registered to the Massachusetts State Plane Coordinate System, Mainland Zone (Fipszone 2001). Units are meters.

**Sources:** MassGIS (Bureau of Geographic Information), Data: NHESP Potential Vernal Pools, NHESP Certified Vernal Pools, Municipalities & Counties data layers (downloaded on 12/22/2025).

**Properties:**  
Created by: Peregrine Ridge Consulting & The Dennis Conservation Land Trust. This work is licensed under CC BY-SA 4.0.  
Data Analysis: Fernando Mendonca, Ph. D., David Fryxell, Ph. D., Jen Clifford, B. Sc.  
Creation Date: January 2026

**Scale:** The color gradient scale represents the Proportion of Certified/Potential Vernal Pools by Town in percent (%). The magenta fill (NA) represents Towns without Potential Vernal Pools.

**Table:** Analyses of regulatory data layers, showing the number of Certified Vernal Pools (CVP), the number of Potential Vernal Pools (PVP), Percent of Certified Vernal Pools / Potential Vernal Pools, and State Rank.

**Plot:** Cumulative Count of Certified Vernal Pools in Middlesex County from May 1988 through December 2025. The red line represents a LOESS curve.

THE DENNIS CONSERVATION LAND TRUST  
PEREGRINE RIDGE CONSULTING  
PeregrineRidgeConsulting.com  
DennisConservationLandTrust.org

